

WinFrog Device Group:	OUTPUT
Device Name/Model:	QMIPS
Device Manufacturer:	
Device Data String(s) Output to WinFrog:	NONE
WinFrog Data String(s) Output to Device:	Date, Time, Easting ship, Northing ship, Easting towfish, Northing towfish
WinFrog Data Item(s) and their RAW record:	OUTPUT NONE

DEVICE DESCRIPTION:

QMIPS is a data format commonly used with side scan sonar data. This device is designed to output the grid coordinates for the tracked offsets of both the ship and the tow fish on side scan sonar projects.

DEVICE CONFIGURATION INSTRUCTIONS

WINFROG I/O DEVICES > EDIT I/O:

Serial

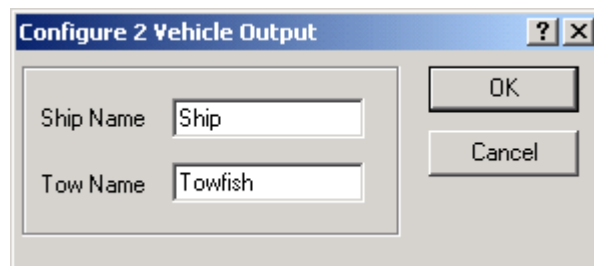
Configurable Parameters

A dialog appears in which to change the name of the device if desired.

WINFROG I/O DEVICES > CONFIGURE DEVICE:

This device must be configured at the I/O Device window level. In the I/O Devices window, click the device name to select it, then right-click and select Configure Device.

The Configure 2 Vehicle Output dialog box appears, as seen below.



Enter the names of the two vehicles for which data is to be output. The names entered must match exactly, in spelling and in case, with the names assigned to the vehicles in WinFrog or no data will be output.

WINFROG VEHICLE > CONFIGURE VEHICLE DEVICES > DEVICE DATA ITEM > EDIT:

Adding the QMIPS device creates the OUTPUT data item.

Data item: OUTPUT, QMIPS, OUTPUT

There are no Edit options available for this data item. However this data item must be added to both vehicles' device lists in order for data to be output.